



# SIMPYONG GROUP

Industrial Agricultural Machinery Engineering

Keper Rt. 10 Rw. 05 Kec. Krembung 61275 Kab. Sidoarjo Jawa Timur.

Phone & Fax : ( 0343 ) 858461 , email : odane\_77@yahoo.co.id.



## ITARU

### Circulating Multi Dryer

High Speed Drying Corn / Paddy Low Broken

Without Upper Screw

Valve  
Hot Or Fresh Air

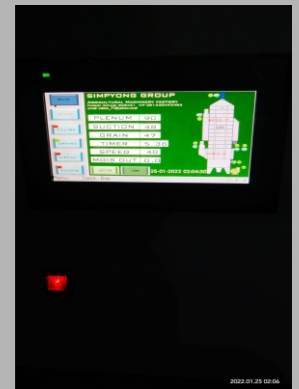


Full Body Stainless Steel

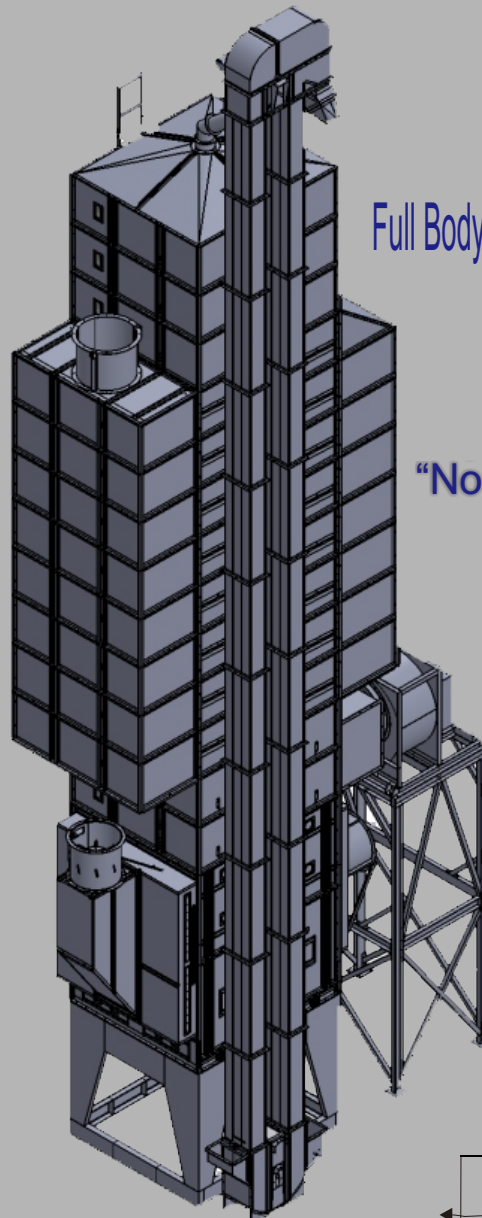


"No Corrosion"

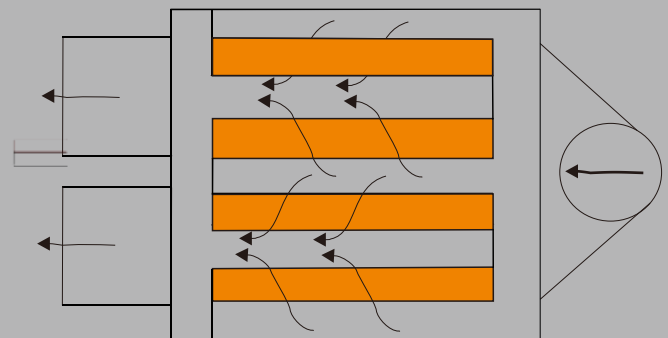
TouchScreen  
PLC System



Double Turbo  
Blower



Perforated & Triangle Air  
Flow system



AGRICULTURAL ENGINEERING SUPPLY

I Made in Indonesia

## FEATURES :

- ✍️ With Stainless Steel Material, the Dryer is low Corrosion and abrasiveness .
- ✍️ Dengan Bahan Stainless Steel, Dryer ini sangat tahan terhadap Korosi dan Gesekan.
- ✍️ Use With Turbo Blower and Centrifugal dust Blower, the Dryer can be fast the suction air smoke and dust flow go out so high efficiency in drying rate and more than clean.
- ✍️ Dengan menggunakan Turbo Blower dan Blower Centrifugal Penghisap Debu, maka Dryer ini sangat cepat mengeluarkan uap air dan debu sehingga sangat efisien waktu pengeringan dan hasil lebih bersih.
- ✍️ Optional Type With / Without Lower Screw and Auto controlled temperature with PLC control and Touch Svreen ensure CONSTAN regularly and Eazy operation so can be low broken.
- ✍️ With Double input hot Air line, can be fast the hot Air Flow go to triangle upper section dan Screen Drying lower section material
- ✍️ Dengan dilengkapi 2 ( dua ) saluran pemasukan udara Panas , maka aliran udara panas bisa lebih cepat masuk ke ruang pengeringan bahan.

## Process

The Vertical Circulating Multi Dryer to operated automatically circulating the grain continously and than time finish target the grain moisture drying. During Process Drying the hot air flow double input line continously and controlled by PLC system ensure Constan regularly.

Dryer Multi Sistem Sirkulasi Vertical ini beroperasi secara sirkulasi bahan secara terus menerus sampai target pengeringan kadar air tercapai. Selama Proses pengeringan udara panas melalui 2 ( dua ) saluran pemasukan secara terus menerus dan di kendalikan oleh panel PLC secara konstan dan teratur.

## Specifications :

MODEL		MD2B -10	MD2B -20	MD2B -30
ITEM				
Dimension	W x L x H (m)	1,88 x 2 x 12	1,88 x 2 x 15	3 x 2 x 18
Capacity	Paddy (Ton)	10	18	30
	Corn	5	12	24
Drying Rate	Paddy (% / h)	0,8 - 1,2	0,8 - 1,2	0,8 - 1,2
	Corn	3 - 5	3 - 5	3 - 5
Calories Needed	( Kcal /Hour)	100 - 150	150 - 250	250 - 300
Fuel Consumptions	Husk ( kg )	28 - 50	50 - 75	100 - 150
Power	( KW )	13,475 & 7,5	13,475 & 15	16,5 & 18
Control system	Safety	Overheat protector, Overload Protection, Thermal sensor, Airflow valve, Alarm.		
	Operation	Progammable Logic Control System with Touch Screen		

Specifications are subject to change without prior notice / Spesifikasi ini dapat berubah setiap saat tanpa pemberitahuan terlebih dahulu



**SIMPYONG GROUP**  
 Industrial Agricultural Machinery Engineering  
 Keber Rt. 10 Rw. 05 Kec. Krembung 61275 Kab. Sidoarjo Jawa Timur.  
 Phone & Fax : ( 0343 ) 858461 , email : odane\_77@yahoo.co.id.